

# BIRTHDAY PARTIES

Thank you for joining us for this special celebration, we're so excited to welcome you to the woods! We hope everyone has a fantastic time exploring, playing, and making magical memories.

## Location:

Our secret woodland camp is nestled in the heart of Grammarcombe Woods, Ashcombe Estate, Ashcombe, Devon. The best way to find us directly is using What3Words: [universe.thirsty.chuck](https://www.what3words.com/universe.thirsty.chuck)

## Directions:

### From Exeter:

- Follow the M5 west as it becomes the A38.
- At Telegraph Hill, take the left fork onto the A380 towards Torquay.
- After approx. 3 miles, take the left exit signed Teignmouth (B3192).
- At the roundabout, turn left towards Ashcombe.
- Follow the road around the bend. In about 500 yards, look for the A Touch of the Wild signs at the double gateway on your left.

### From Newton Abbot/Torquay:

- Head north on the A380 towards Exeter.
- Follow signs for Ashcombe/Chudleigh.
- Take the slip road and follow signs for the B3192.
- Go over the bridge across the dual carriageway.
- At the roundabout, go straight on towards Ashcombe.
- After approx. 500 yards, you'll see the A Touch of the Wild signs at the double gateway on your left.

## Parking:

There's plenty of free parking available for over 100 cars.

## Getting into Camp:

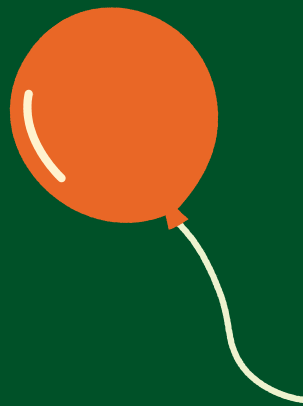
After parking, follow the signs to 'Wild Tot's camp which is towards the top of the parking area, follow the track into camp where your camp leader will be there to greet you.

## On Arrival:

Please complete a quick consent form, including emergency contact details and any medical/allergy information for your child. If someone else is bringing your child, make sure they're able to provide this information on your behalf.

## Weekend Contact Info:

Please note our office is closed at weekends. If you're running late or unable to attend, kindly contact the birthday child's parents directly, as the office phone won't be monitored.



# BIRTHDAY PARTIES

## Toilet Facilities

We have a compost toilet available at camp for everyone to use. As facilities are basic, we recommend using the WC before arriving where possible.

## What to Bring - Kit List

Please dress your child for a fun and possibly muddy day outdoors. It's always cooler in the woods, so come prepared, checking the weather forecast beforehand is a good idea.

### May - October:

- Sun hat
- Suncream (applied at home)
- Covered toe shoes or boots
- Long trousers

### October - May:

- Warm layers
- Insulated waterproof coat
- Waterproof trousers
- Two pairs of warm socks
- Spare warm jumper or fleece
- Wellington boots
- Hat, gloves, and scarf (if very cold)

Comfort and warmth really make a difference to your child's enjoyment in the woods! Tip: A change of clothes in the car can be handy for the ride home!

## Safety Notes

- Our woodland camp is a strictly no-smoking area.
- Children must not bring pen knives or any sharp tools.
- While our staff don't carry First Aid kits on them at all times, a fully stocked kit is always kept very close to hand and accessible throughout the session.

## Share the Magic!

We love seeing the joy of woodland play captured in photos and videos! If you get any great shots during the party, please do share them on your social media and tag us: Instagram/Facebook: @atouchofthewild Your support helps us grow and bring more woodland magic to local families

## For the Party Organiser Only

Please ensure this information is shared with all parents/guardians of attending children. We'll email you one week before the party with your Party Leader's contact number. If you haven't received it 4 days before, please get in touch with our office. Consent forms will be completed on arrival, but it's your responsibility to ensure someone can do this on behalf of each child attending.

**We can't wait to host you in the woods, we promise it'll be a magical day full of wild adventures!**