

# WILD TOTS

We're so excited to welcome you and your little ones to the woods for a Wild Tots adventure! Get ready to explore, play, create, and slow down together as we enjoy the magic of the outdoors. Once you've booked your place, here's everything you need to know before your visit...

## Location:

Our secret woodland camp is nestled in the heart of Grammarcombe Woods, Ashcombe Estate, Ashcombe, Devon. The best way to find us directly is using What3Words: [universe.thirsty.chuck](https://www.what3words.com/universe.thirsty.chuck)

## Directions:

### From Exeter:

- Follow the M5 west as it becomes the A38.
- At Telegraph Hill, take the left fork onto the A380 towards Torquay.
- After approx. 3 miles, take the left exit signed Teignmouth (B3192).
- At the roundabout, turn left towards Ashcombe.
- Follow the road around the bend. In about 500 yards, look for the A Touch of the Wild signs at the double gateway on your left.

### From Newton Abbot/Torquay:

- Head north on the A380 towards Exeter.
- Follow signs for Ashcombe/Chudleigh.
- Take the slip road and follow signs for the B3192.
- Go over the bridge across the dual carriageway.
- At the roundabout, go straight on towards Ashcombe.
- After approx. 500 yards, you'll see the A Touch of the Wild signs at the double gateway on your left.

## Parking:

There's plenty of free parking available for over 100 cars.

## Getting into Camp:

After parking, follow the signs to 'Wild Tot's camp which is towards the top of the parking area, follow the track into camp where your camp leader will be there to greet you.

## Late Arrivals

If you are running late, please contact your Forest School Leader. (Please check your booking confirmation and save your leader's contact details before your visit.)

## Toilet Facilities

We have a compost toilet available at camp for everyone to use. As facilities are basic, we recommend using the WC before arriving where possible.

## Buggies & Pushchairs

You are welcome to bring your Wild Tot in a buggy or pushchair if you wish. However, the walk into the woods is short and the ground can be uneven, so most parents find it easier to carry their baby in a sling during the session.

# WILD TOTS

## Nappies

A changing area will be available for your little one(s). We kindly ask that you take used nappies home with you, as we do not have facilities to dispose of them at camp.

## What to Bring - Kit List

Please dress your child for a fun and possibly muddy day outdoors. It's always cooler in the woods, so come prepared, checking the weather forecast beforehand is a good idea.

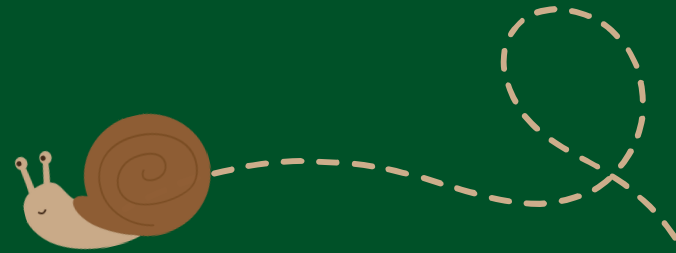
May - October:

- Sun hat
- Suncream (applied at home)
- Covered toe shoes or boots
- Long trousers

October - May:

- Warm layers
- Insulated waterproof coat
- Waterproof trousers
- Two pairs of warm socks
- Spare warm jumper or fleece
- Wellington boots
- Hat, gloves, and scarf (if very cold)

Comfort and warmth really make a difference to your child's enjoyment in the woods! Tip: A change of clothes in the car can be handy for the ride home!



## Food & Drink

Please bring snacks and a water bottle for your child/children.

We also provide drinks during the session:

- Hot chocolate on chillier days
- Squash when the weather is warmer
- Tea/coffee for adults when we are at camp

Please note: on woodland walk sessions, hot drinks for adults may not always be possible

## Safety Notes

- Our woodland camp is a strictly no-smoking area.
- While our staff don't carry First Aid kits on them at all times, a fully stocked kit is always kept very close to hand and accessible throughout the session.

## Ticks

As with any woodland area, ticks can occasionally be present, especially in long grass or where deer pass through. As a precaution, please check your child(ren) for ticks after your visit.

## Share the Magic!

We love seeing the joy of woodland play captured in photos and videos! If you get any great shots during the party, please do share them on your social media and tag us:

Instagram/Facebook: @atouchofthewild Your support helps us grow and bring more woodland magic to local families.

**If you have any questions about the day, please contact our office on 07929 613284.**

**We look forward to welcoming you to the woods soon!**

